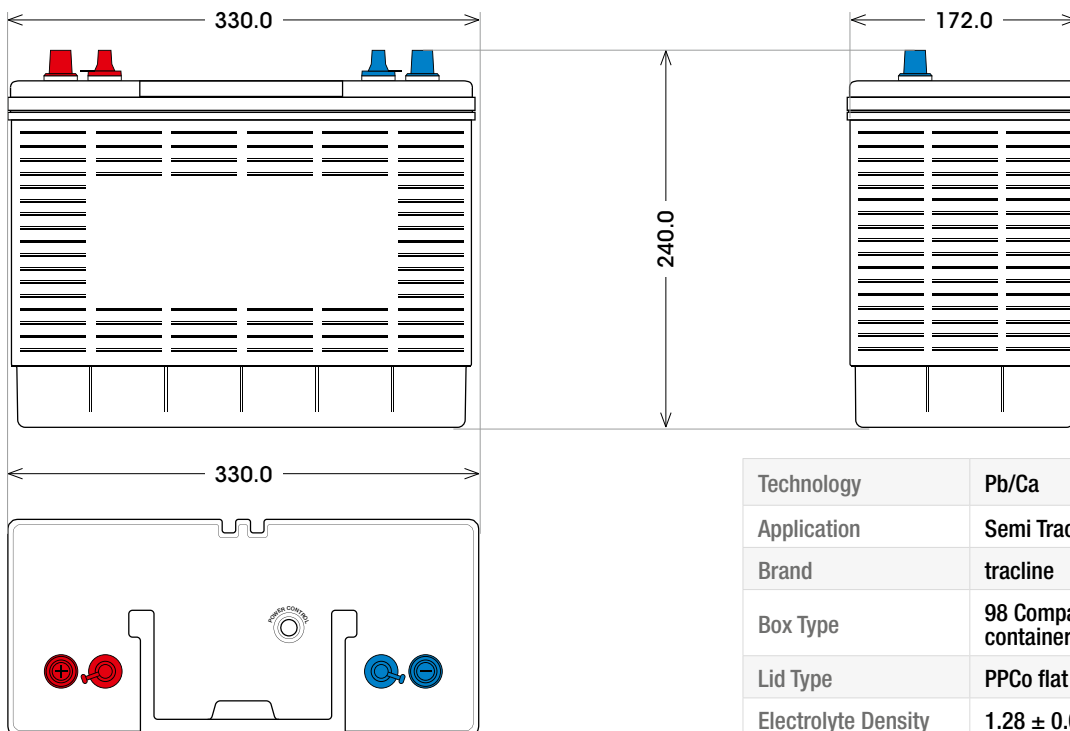




Antrieb & Beleuchtung

ART. NR.: **TRNAB12-110**

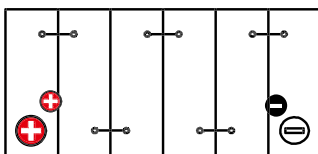
DIN-NR.: **95950**



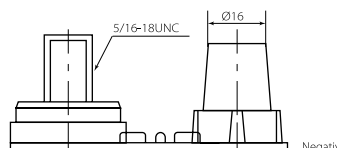
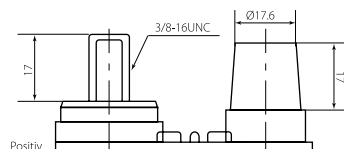
Bottom holder **B00**



Layout **1 (DP)**



Terminal **12**



| | |
|---------------------------|--|
| Technology | Pb/Ca |
| Application | Semi Traction |
| Brand | tracline |
| Box Type | 98 Compact, PPCo, HL (handle to container) |
| Lid Type | PPCo flat lid with M27 plugs |
| Electrolyte Density | 1.28 ± 0.01 g/cm ³ |
| Water loss | VERY LOW |
| Separator | Polyethylene + GM (1.3 mm) |
| Number of cycles 50% DOD: | 150 (according to EN 50342-1:2015) |
| Voltage | 12 Volt |
| Capacity 100h | 115 Ah |
| Capacity 20h | 100 Ah |
| Capacity 5h | 95 Ah |
| Size L x W x H | 330 x 172 x 240 (mm) |
| Layout | 1 (DT) |
| Terminal | 12 |
| Bottom holder | B00 |
| Weight | 26,6 kg |
| Packaging | 36 pieces/euro pallet |
| Shipment regulation: | - Normal for road transportation - Special condition 8 class hazard UN2794 for sea transportation |

tracline

